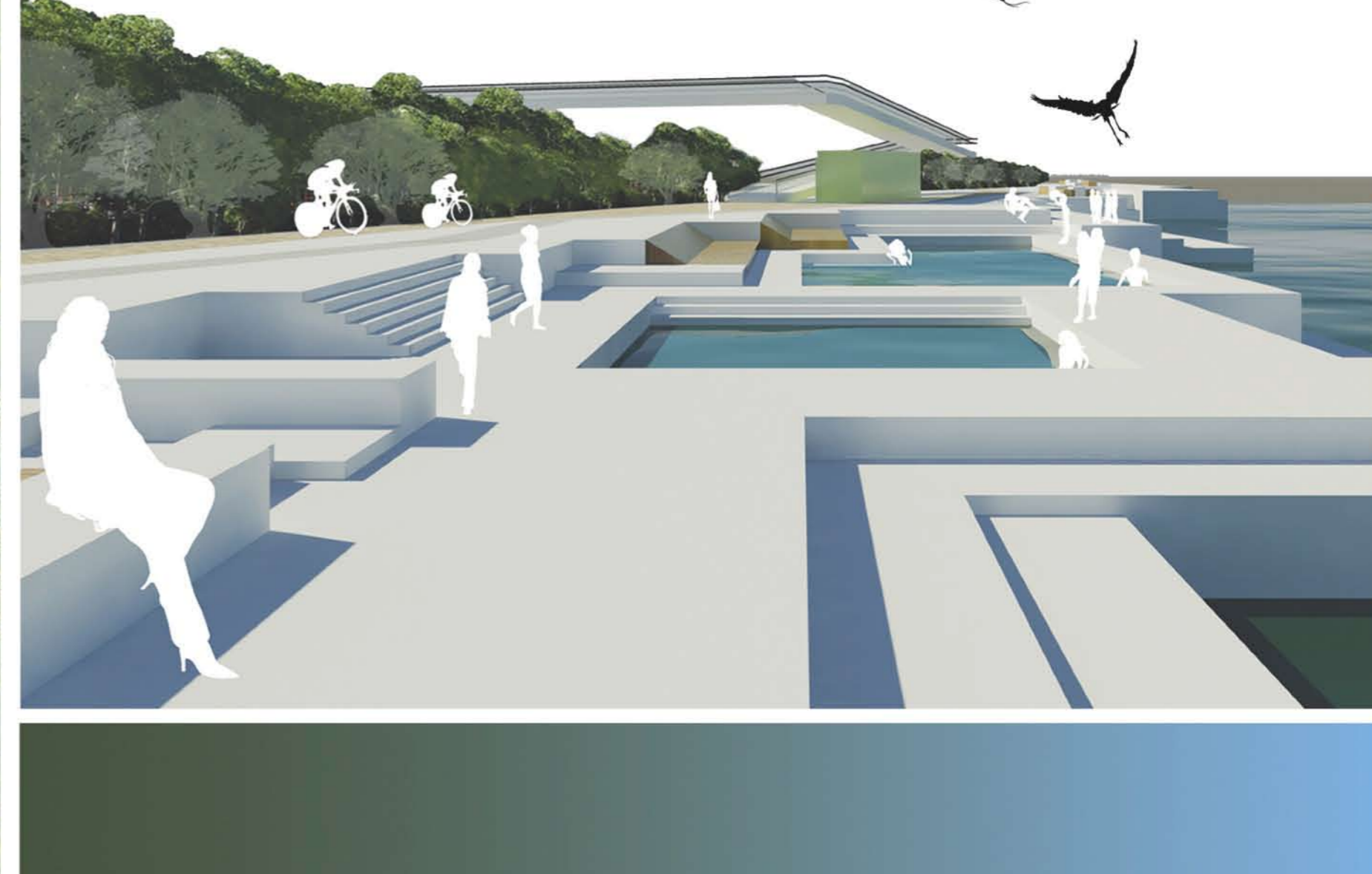


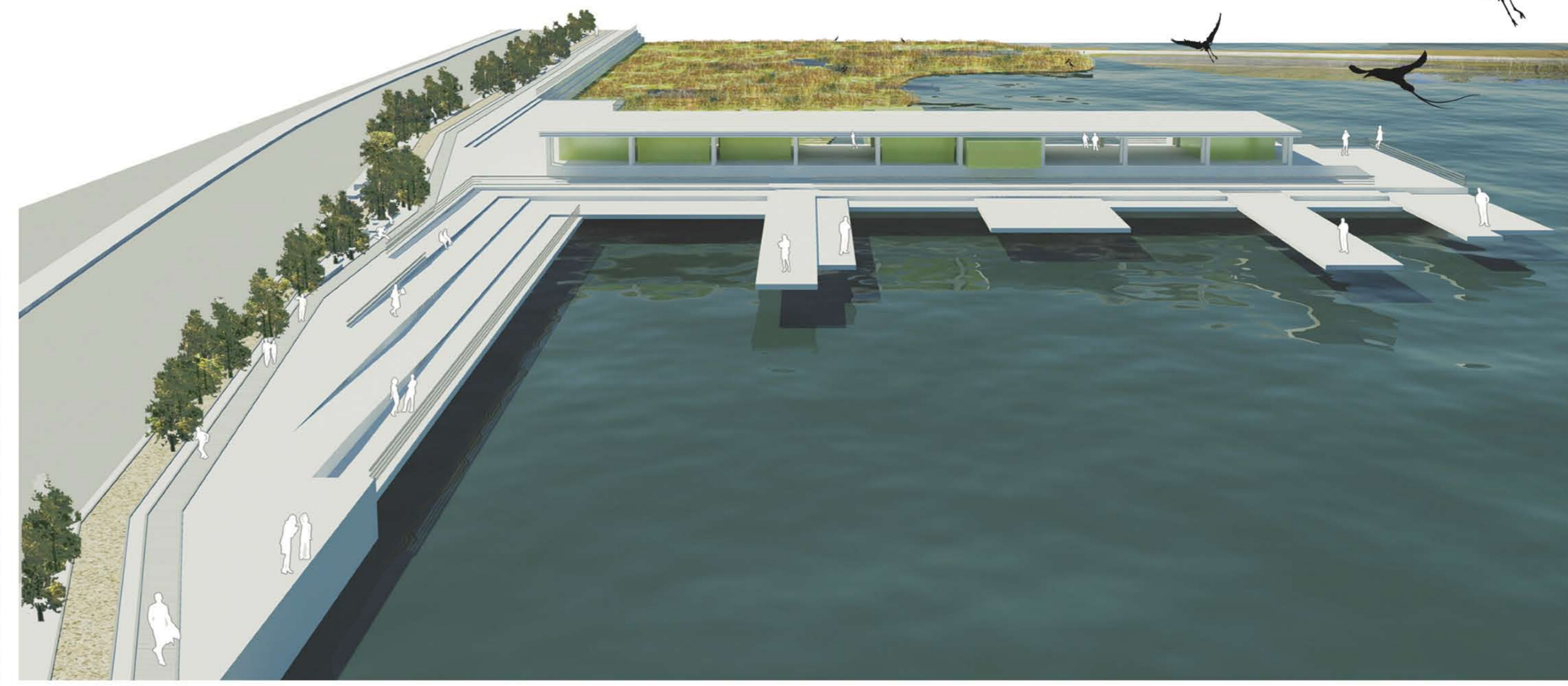
A conceptual section of activities connecting the highway to the water. ▲



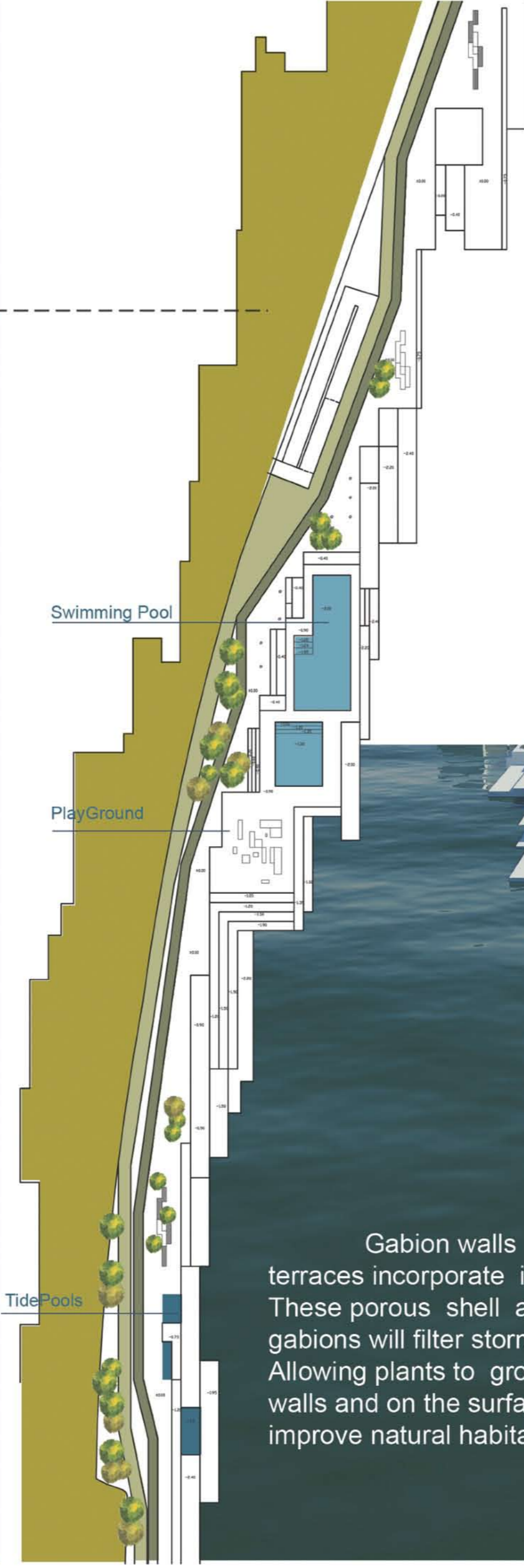
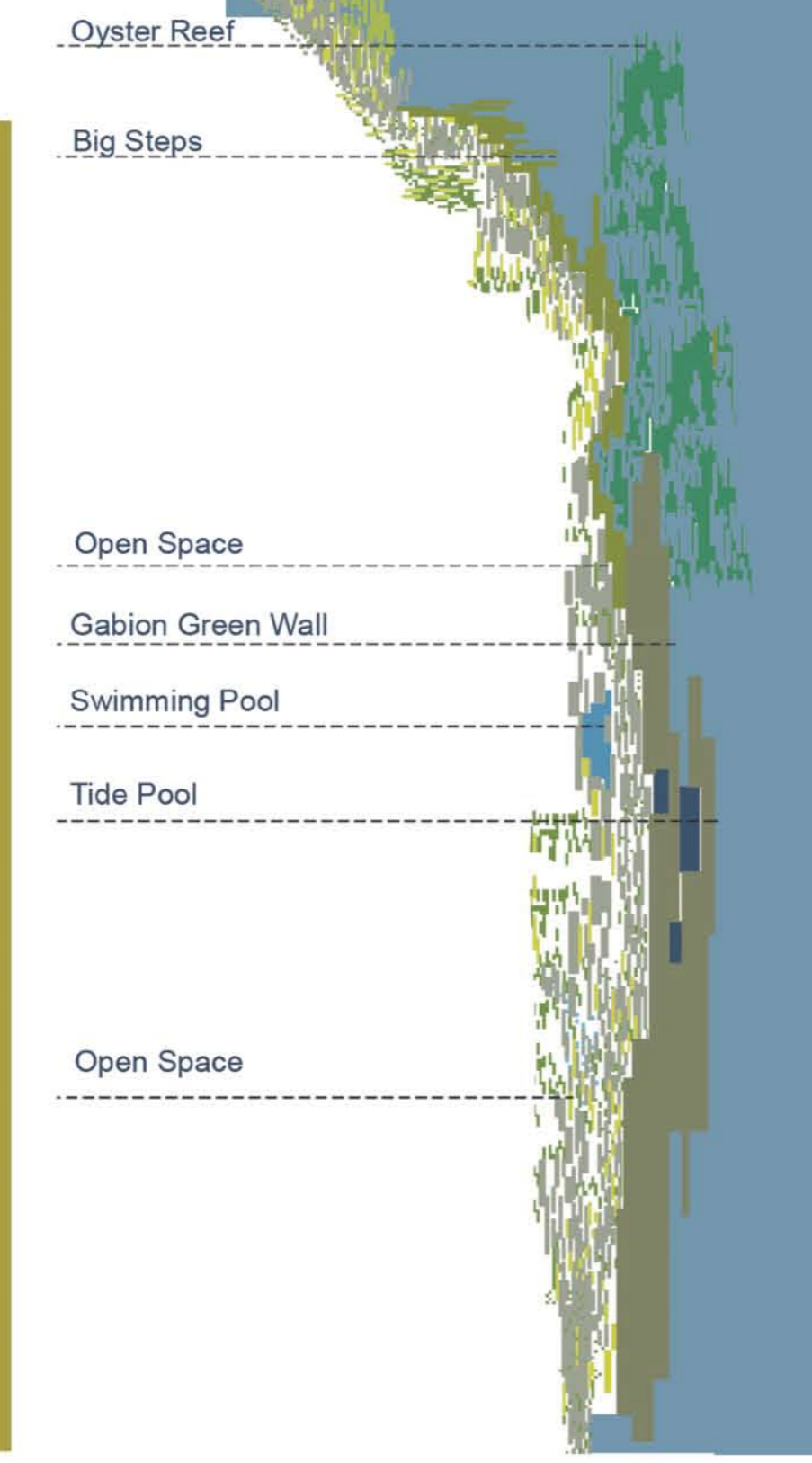
Redefining The Edge

“The Edge is no more a separation between water and land.”

Principal aim of the project is to redefine the concept of the edge, and to blur the boundary between water and land. A spectrum of activities and uses will turn the east river esplanade into a vibrant zone. By incorporating different spaces and strategies the design will try to prevent water contamination and will help to create a natural habitat for a variety of wildlife. **Big steps** and gabion terraces are the most important design tools that act both as structure, storm water runoff filter, and also as a means of access to the water. **Marshes** are critically important wildlife habitat, serving as breeding ground for a wild variety of animals. **Oyster Reef**, Produces natural habitat as well as being a biofilter. It also helps to elevate the economic power of the community.



A section between 111th St & 84th St (Carl Schurz Park) is chosen as the .



A gradient of blue and green activities stretch along the esplanade.

- Swimming Pools,
- Fishing Place,
- Fountain Park
- Big steps
- Bike Path
- Jogging & Walking Path
- Kayaks and hand powered boat access
- Bicycle Rentals,
- a space for the community
- Pop Up restaurants and cafes

Gabion walls as steps and terraces incorporate intertidal pools. These porous shell and rock filled gabions will filter storm water runoff. Allowing plants to grow both on the walls and on the surface, they will improve natural habitat.

